



PRIMEPROPERTY.CO.NZ

Primeproperty House - 2 Woodward St, CBD, Wellington

Situated at the beginning of the bustling golden mile, opposite Midland Park, our nine storey office tower is easily accessible to transport links and the surrounding business hub. The smart modern foyer, refurbished bathrooms and ample natural light make this building a pleasant and affordable workspace. We offer flexible and negotiable rental terms as well as incentives such as utilising our architects and builders for your new office fit-out. Building facilities include; -Heating and electricity access -High speed broadband access -Directory board listing -24 hour swipe card building access -CCTV security -Rubbish collection -Opening windows -PO Box address & mail delivery -Shared kitchen -Cleaning of common areas -Lift -WC (separate male and female) -Dedicated Office Manager This property also offers serviced office packages. See our home page for more information on serviced offices.

Location: Primeproperty House is located on the corner of Lambton Quay and Woodward Street.

Areas Available: Various smaller suites from 17m2 - 35m2.

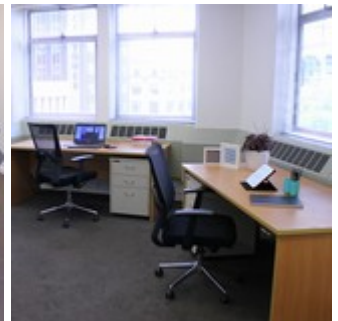
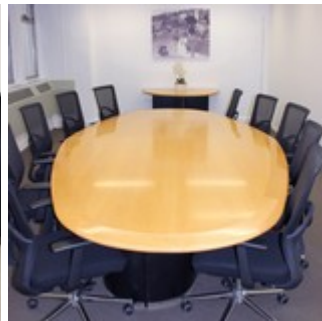
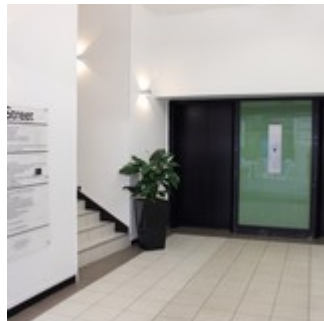
Level 5 - 55 m2

Asking Rental: Negotiable

Car Parks: Priority parking available nearby at 139 The Terrace

Floor Plans: from lessor

Access Arrangements: contact Matt Spence



Matt Spence

Sales & Leasing Primeproperty Group

T: (04) 460 0455 **M:** 021 822 691

E: matt@primeproperty.co.nz

Disclaimer: Whilst every precaution has been taken to ensure that the information contained herein is true and accurate, we accept no responsibility or liability in respect of any errors, inaccuracies or misstatements contained herein. Rates are quoted exclusive of GST and are subject to change. Information contained herein is informative only. This is NOT a contract.

© Prime Property Group 2021
Generated 12/05/2021 4:44:02 AM