



PRIMEPROPERTY.CO.NZ

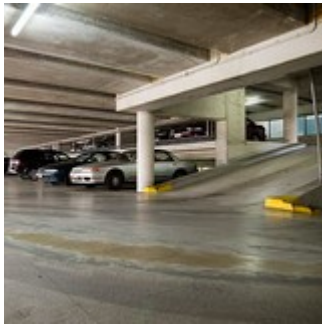
Stout Street Car Park - 9-13 Stout Street, Wellington

A 6 storey secure car parking building with 13 split car parking levels. Independently managed and serviced by 1, 10 person lift. A mix of daily, casual and permanent parking options.

Location: Located on the corner of Stout Street and Balance Street.

General Description: A 6 storey secure car parking building with 13 split car parking levels. A mix of daily, casual and permanent parking options.

Access Arrangements: Andrew Monahan



Matt Spence

Sales & Leasing Primeproperty Group

T: (04) 460 0455 M: 021 822 691

E: matt@primeproperty.co.nz

Disclaimer: Whilst every precaution has been taken to ensure that the information contained herein is true and accurate, we accept no responsibility or liability in respect of any errors, inaccuracies or misstatements contained herein. Rates are quoted exclusive of GST and are subject to change. Information contained herein is informative only. This is NOT a contract.

© Prime Property Group 2019
Generated 23/07/2019 11:25:12 PM