



PRIMEPROPERTY.CO.NZ

Athol Crescent Car Park - 45 Boulcott Street, CBD, Wellington

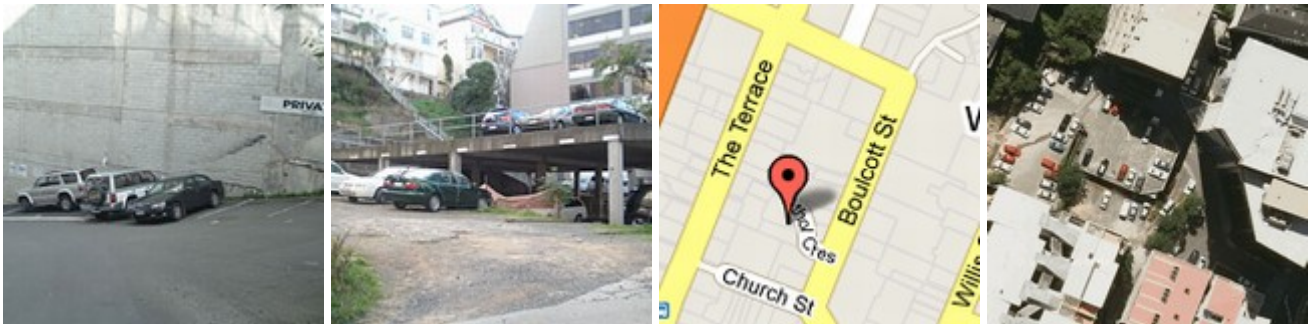
Open, vacant land, marked car parks at side of the Sirrocco Apartment complex, accessed from Athol Crescent. Easy access to Boulcott St, Manners St and Willis St.

Location: Athol Crescent which is off Boulcott St, behind 47 Boulcott Street.

Asking Rental: \$55 pwk +gst

General Description: Vacant land at side of Sirrocco Apartment complex, accessed from Church St and Athol Crescent. Easy access to Wellington CBD.

Access Arrangements: Contac Matt Spence



Matt Spence

Sales & Leasing Primeproperty Group

T: (04) 460 0455 **M:** 021 822 691

E: matt@primeproperty.co.nz

Disclaimer: Whilst every precaution has been taken to ensure that the information contained herein is true and accurate, we accept no responsibility or liability in respect of any errors, inaccuracies or misstatements contained herein. Rates are quoted exclusive of GST and are subject to change. Information contained herein is informative only. This is NOT a contract.

© Prime Property Group 2019
Generated 23/07/2019 11:21:41 PM